



Saskatchewan

# Invasive Plant Species Identification Guide



Second Edition

# Table of Contents

Plant Shapes . . . . .	3
Diagrams of Plant Parts . . . . .	4
Plant Species Listings . . . . .	6
<b>Grasses</b>	
Downy brome - <i>Bromus tectorum</i> . . . . .	7
Japanese brome - <i>Bromus japonicus</i> . . . . .	8
<b>Yellow Flowered Plants</b>	
Absinthe wormwood - <i>Artemisia absinthium</i> . . . . .	9
Wild parsnip - <i>Pastinaca sativa</i> L . . . . .	10
Common tansy - <i>Tanacetum vulgare</i> . . . . .	11
Dalmatian toadflax - <i>Linaria dalmatica</i> . . . . .	12
Yellow toadflax - <i>Linaria vulgaris</i> . . . . .	13
Leafy spurge - <i>Euphorbia esula</i> . . . . .	14
Yellow star thistle - <i>Centaurea solstitialis</i> . . . . .	15
<b>Purplish Flowered Plants</b>	
Canada thistle - <i>Cirsium arvense</i> . . . . .	16
Nodding thistle - <i>Carduus nutans</i> . . . . .	17
Field scabious - <i>Knautia arvensis</i> . . . . .	18
Purple loosestrife - <i>Lythrum salicaria</i> . . . . .	19
Dames rocket - <i>Hesperis matronalis</i> . . . . .	20
<b>Pink Flowered Plants</b>	
Common burdock - <i>Arctium minus</i> subsp. <i>minus</i> . . . . .	21
Salt cedar - <i>Tamarix</i> spp. . . . .	22
Spotted knapweed - <i>Centaurea maculosa</i> . . . . .	23
Russian knapweed - <i>Acroptilon repens</i> . . . . .	24
Red bartisia - <i>Odontites serotina</i> . . . . .	25
<b>White Flowered Plants</b>	
Diffuse knapweed - <i>Centaurea diffusa</i> . . . . .	26
Baby's breath - <i>Gypsophila paniculata</i> . . . . .	27
Field bindweed - <i>Convolvulus arvensis</i> . . . . .	28
Hoary cress or white top - <i>Cardaria draba</i> . . . . .	29
Poison hemlock - <i>Conium maculatum</i> L . . . . .	30
Scentless chamomile - <i>Matricaria perforata</i> . . . . .	31
Hoary alyssum - <i>Berteroa incana</i> . . . . .	32
Ox-eye daisy - <i>Chrysanthemum leucanthemum</i> . . . . .	33
<b>Orange/Red Flowered Plants</b>	
Orange hawkweed - <i>Hieracium aurantiacum</i> . . . . .	34
<b>Glossary</b> . . . . .	36

# Invasive Plant Species Identification Guide

2018 Introduction



The inspiration to develop a province-wide guide to invasive species was originally provided by The Frenchman Wood River Weed Management Area (Julie McKenzie), Grasslands National Park, and other collaborators with the publication of Invasive Plant Species Guide for Southern Saskatchewan. This guide to invasive weeds in the southern region of Saskatchewan was subsequently revised and expanded to create the first edition of Saskatchewan Invasive Plant Species Identification Guide with the support of the Saskatchewan Forage Council and its partners. This guide is to be used as a tool to help identify invasive plant species in Saskatchewan. An invasive plant species is a non-native plant that, because of its growth and reproductive characteristics, can adapt to one or more habitats very

quickly and proliferate, expanding in range. An invasive plant species has a negative economic, ecological, and/or aesthetic effect. The Invasive Plant Species Identification Guide for Saskatchewan has been designed for agricultural producers, land managers, and visitors to Saskatchewan. Producers and land managers play an important role in invasive species management as they are on the ground everyday, acutely aware of changes on the landscape. Visitors to the area often have a keen eye for the vegetation they are seeing. Visitors need to be aware of the threat invasive species pose so that these plants are not brought into, spread around or transported out of the area.

Invasive species are a growing threat to the integrity of native prairie. Native prairie is home to many important and/or rare plants and animals.

The plants that make up native prairie work together to store carbon, maintain water and nutrient cycling, and build soil. Invasive species can upset this balance. Invasive species have been identified as the second largest threat to biodiversity (after fragmentation).

The invasion of non-native species in haylands, tame forage, gravel pits, riparian areas, roadsides and cropland affect the function of these habitats and can cause a downgrade in their usefulness. All of the species included in this guide are a threat to Saskatchewan.

Prevention of invasive species is the most cost effective and environmentally responsible management tool. Do not transport hay, soil, or plants from an area with known infestations to an uninfested area. Do not seed contaminated seed. Many invasive species require some disturbed soil to establish. Keeping permanent cover in a healthy range condition minimizes the amount of habitat an invasive species can colonize. Control new infestations in cultivated fields when they are first noticed. Wash or check

clothing, pets, horses, livestock, equipment and vehicles for plant parts or seeds before coming into or leaving a new area.

Early identification increases the chances of eradication. Take the time to identify that plant that looks out of place, you've never seen before, or has suspiciously shown up. It could save you or your neighbours time and money in the long run!

Some of the invasive plants in this guide have not yet been identified in Saskatchewan, or have only been noted in very isolated populations. They have been included in this guide so that if they are found, rapid identification and control measures can take place prior to an invasion. If you identify one of these invasive plants contact the Provincial Weed Control Specialist at **306-787-4673**.

If you identify an invasive plant species consult with your local Rural Municipality, your local Weed Management Area, a Professional Agrologist, or the Saskatchewan Ministry of Agriculture - Agriculture Knowledge Centre at **1-866-457-2377**.

# Plant Shapes



Rosette



Rosette in  
seedling year



Multi-stemmed



Shrub or tree



Highly  
branched



Branched



Slightly  
branched



Not branched



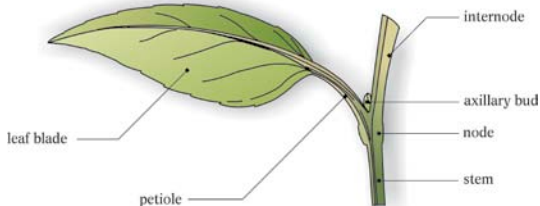
Low and  
spreading



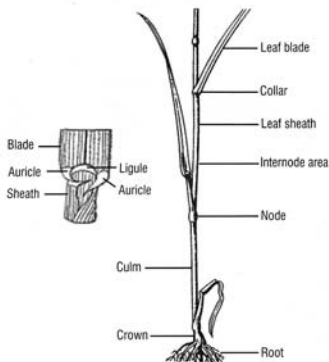
Narrow with  
drooping seed  
head

The shape of a plant can be used as a distinguishing characteristic—setting it apart from other plants. Some plants can have more than one shape depending on their life cycle, habitat, or the climate.

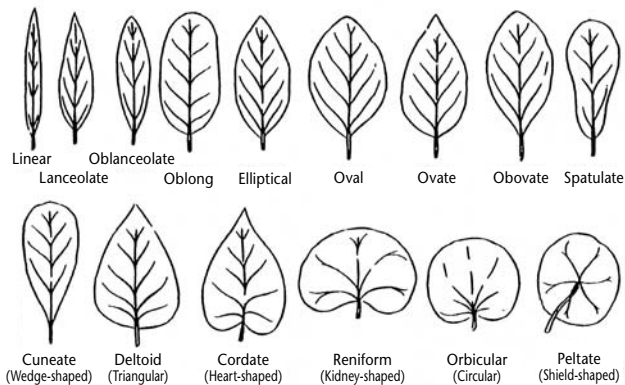
## Leaf Parts



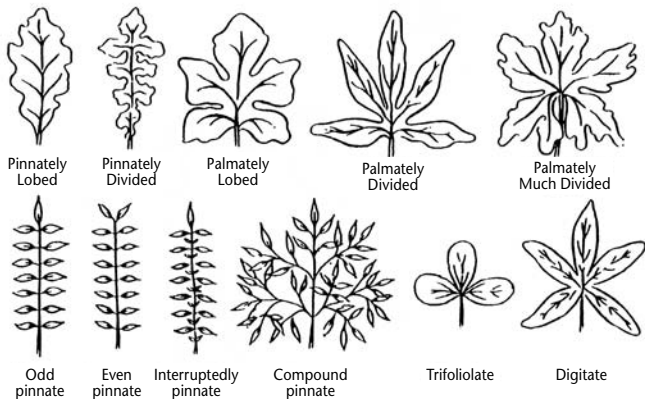
## Grass Plant Parts



## Shapes of Simple Leaves



## Types of Divided Leaves



## Plant Species Listing

In Saskatchewan, plant species are designated as prohibited, noxious or nuisance in the *Weed Control Act*.

It is required that prohibited weeds be eradicated and prevented from further spread. Isolated noxious weed infestations shall be eradicated and established noxious infestations shall be contained and controlled.

Prohibited and noxious weeds pose a threat of invasion, rapid spread and difficulty in control. The designation of species is identified on each page with these symbols.



Prohibited



Noxious

## Management Methods

There are many methods that can be used to manage invasive plant species. Integrated management involves utilizing multiple methods to improve effectiveness.

Biological control is using the invasive plant's natural enemies. These may include insects, bacteria or fungal parasites.

Chemical control is applying the appropriate herbicide to the invasive plant. Always follow label directions and consult the current Guide to Crop Protection.

Targeted grazing is the grazing of livestock to accomplish specific management objectives.

Physical control is using a manual or mechanical operation to remove the problem weed.

The appropriate integrated controls will vary depending on the physical characteristics of the weed species. The control methods of each species is identified on each page with these symbols.



Biological



Chemical



Targeted Grazing



Physical



**N**

## Downy Brome – *Bromus tectorum*

**Also Known As:** cheatgrass, thatch brome grass, early chess, downy chess

**General Description:** hairy, purplish tinged winter or summer annual grass with fibrous roots; often growing in dense patches; seed spikelets droop to one side

**Leaves:** 0.75 to 6 inches (1.9 to 15.2 cm) long, green; soft hairs on the top and bottom of leaf; lacks auricles, but has a jagged 0.04 to 0.12 inch (0.1 to 0.3 mm) long hairless ligule

**Stems:** slender, upright, hairy; leaf sheath has long hairs; often purplish tinged

**Height:** 3 to 24 inches (7.6 to 61 cm) tall

**Flower:** drooping, spreading spikelets (of 4 or more seeds) on slender twisting branches; droops to one side; rough 0.38 to 0.75 inch (1.0 to 1.9 cm) long straight to slightly bent awns; purplish tinged

**Habitat:** tame forage, native prairie, yard sites, cropland, waste areas and roadsides

**Time of Flowering:** heads out in May through June with seed set shortly thereafter

**Key Distinguishing Characteristic(s):** similar to Japanese brome (*Bromus japonicus*), distinguishable by smaller seeds, lack of silky hairs on the ligule, straight to slightly bent awns and a more spreading appearance of the drooping seed heads

**Impact:** displaces native vegetation, reduces crop yields and increases risks of wildfire; awns can cause injury to grazing livestock

### Plant Shape



### Management



**N**

## Japanese Brome - *Bromus japonicus*

Japanese Brome

**Also Known As:** Japanese chess, field brome

**General Description:** hairy, purplish tinged, winter or summer annual grass with fibrous roots; often growing in dense patches; drooping, compact, flattened seed spikelets

**Leaves:** 1.5 to 6 inches (3.8 to 15.2 cm) long, green; soft hairs on the top and bottom of leaf; lacks auricles, but has a jagged 0.02 to 0.08 inches (0.05 to 0.2 cm) long hairy ligule

**Stems:** slender, upright, hairy; leaf sheath has long hairs

**Height:** 3 to 27 inches (7.6 to 69 cm) tall

**Flower:** slightly drooping spikelets (of 4 or more seeds) on slender twisting branches; rough 0.38 to 0.75 inch (1.0 to 1.9 cm) long sharply bent and/or twisted awns; purplish tinged

**Habitat:** tame forage, native prairie, yard sites, cropland, waste areas and roadsides

**Time of Flowering:** heads out in May through June with seed set shortly thereafter

**Key Distinguishing Characteristic(s):** similar to downy brome (*Bromus tectorum*) – distinguishable by silky hairs on the ligule, compact appearance of slightly drooped seed heads, and sharply bent and/or twisted awns

**Impact:** displaces native vegetation, reduces crop yields and increases risks of wildfire; awns can cause injury to grazing livestock

### Plant Shape



### Management



**N**

## Absinthe Wormwood – *Artemisia absinthium*

**Also Known As:** absinthe, wormwood, wormwood sage

**General Description:** greenish-grey, multi-stemmed perennial with tap root growth; top growth dies back yearly

**Leaves:** 1 to 3 inches (2.5 to 7.6 cm) long, greenish-grey, silky haired; divided into deep segments or lobes; on long stalks near base—shorter higher up the stem; alternate on the stem

**Stems:** woolly, grooved, greenish-grey; many stems come from basal rosette

**Height:** up to 60 inches (152 cm) tall

**Flower:** small yellowish tubular flowers in clusters; flower clusters 0.08 to 0.12 inches (0.2 to 0.3 cm) in diameter; inconspicuous and plentiful

**Habitat:** tame forage, waste areas, yard sites, cropland, roadsides and gravel pits

**Time of Flowering:** late July through September

**Key Distinguishing Characteristic(s):** strong sage-like odour; divided and silky haired leaves on stems from a rosette

**Impact:** competes with other vegetation; taints hay (not palatable to livestock)

### Plant Shape



### Management



**N**

## Wild Parsnip – *Pastinaca sativa*

Wild Parsnip

**Also Known As:** poison parsnip

**General Description:** biennial or short-lived perennial with a thick white to pale yellow taproot; flat-topped umbel flowering structure

**Leaves:** first year leaves are a compact rosette close to the ground; second year leaves up to 16 inches (40 cm) in length; alternate, compound with 15 leaflets; margins severely toothed or lobed.

**Stems:** round and grooved; lightly hairy; branched at upper nodes

**Height:** erect; up to 60 inches (152 cm) tall

**Flower:** small yellow flowers form flat-topped umbels at the top of the stem

**Habitat:** tame forage, sunny open areas, waste areas, roadsides

**Time of Flowering:** May through September

**Key Distinguishing Characteristic(s):** yellow umbel flowers; sharply toothed leaves

**Impact:** competes with other vegetation; sap contains chemical that can cause skin burns, blisters or rashes after exposure to sunlight

### Plant Shape



### Management



**N**

## Common Tansy – *Tanacetum vulgare*

**Also Known As:** garden tansy, yellow buttons

**General Description:** aromatic, perennial with tap and creeping root system; rhizome root growth; distinct flat-topped, yellow button-like flowers

**Leaves:** 4 to 8 inch (10.2 to 20.3 cm) long, green, almost fern-like; on short stalks, with jagged, deeply lobed segments; strong smelling; alternate on the stem

**Stems:** slightly branched, often purplish-red, dotted with small glands; many branches grow from the same rootstock

**Height:** 18 to 36 inches (46 to 91 cm) tall

**Flower:** yellow, daisy-like without petals; grouped on the tops of the plants

**Habitat:** riparian areas, tame forage, native prairie, roadsides, waste areas and gravel pits

**Time of Flowering:** July through September

**Key Distinguishing Characteristic(s):** Button-like flowers (daisy without petals) and sharply toothed leaves

**Impact:** chokes out other vegetation; although generally avoided by livestock, if consumed, it can have toxic effects ranging from none to abortions and in very rare cases death

Common Tansy

### Plant Shape



### Management





**P**

## Dalmatian Toadflax – *Linaria dalmatica*

Dalmatian Toadflax

**Also Known As:** butter and eggs, wild snapdragon, *Linaria genistifolia* spp. *dalmatica*

**General Description:** perennial with tap root and creeping root system; snapdragon-like flower heads; produces clear to slightly milky juice when leaves or stems are broken

**Leaves:** 0.75 to 2.4 inches (1.9 to 6.0 cm) long, waxy green, hairless; heart-shaped and clasping the stem; alternate on the stem

**Stems:** slightly branched with woody base and thick waxy coating

**Height:** 15 to 48 inches (38 to 122 cm) tall

**Flower:** light yellow; snapdragon-like with prominent spur at the flower base; located along the upper portion of the stems in a spike like cluster

**Habitat:** tame forage, native prairie, cropland, yard sites, roadsides and gravel pits

**Time of Flowering:** late June through August, possibly into September

**Key Distinguishing Characteristic(s):** broad, heart-shaped leaves which clasp the stem; snapdragon-like yellow flowers; grows in diffuse patches

**Impact:** chokes out other vegetation; can hybridize with yellow toadflax

### Plant Shape



### Management



**N**

## Yellow Toadflax – *Linaria vulgaris*

**Also Known As:** butter and eggs, Jacob's ladder, wild snapdragon

**General Description:** perennial with tap root and creeping root systems; snapdragon-like flower heads; produces clear to slightly milky juice when leaves or stems are broken

**Leaves:** 0.75 to 4 inches (1.9 to 10.2 cm) long; pale to silvery-green (waxy), hairless; long and lance-shaped on short leaf stems; alternate, but can appear almost opposite when crowded on the stem

**Stems:** hairless and woody red at base; slightly hairy and green near top

**Height:** 4 to 36 inches (10.2 to 91 cm) tall

**Flower:** light yellow with orange centers; snapdragon-like with prominent spur at the flower base; in spike-like clusters along the upper portion of the stems

**Habitat:** tame forage, native prairie, cropland, yard sites, roadsides and gravel pits

**Time of Flowering:** late June through August, possibly into September

**Key Distinguishing Characteristic(s):** long, narrow, alternate leaves on short leaf stems; snapdragon-like flowers; grows in dense patches

**Impact:** chokes out other vegetation and is slightly toxic to livestock; can hybridize with dalmatian toadflax

Yellow Toadflax

### Plant Shape



### Management



**N**

## Leafy Spurge – *Euphorbia esula*

Leafy Spurge

**Also Known As:** spurge**General Description:** perennial with tap root and creeping root system; single stem plant grown in a cluster; distinct yellowish-green bracts emerge in June on plant tops**Leaves:** 0.25 to 1.5 inches (0.6 to 3.8 cm) long, green, hairless; long and lance-shaped; alternate on the stem**Stems:** hairless, pale green to blue-green**Height:** 6 to 36 inches (15 to 91 cm) tall**Flower:** inconspicuous, yellowish-green; small, less than 0.12 inches (0.3 cm) wide, lacks petals; flowers sit within clustered, showy yellowish-green bracts on plant tops**Habitat:** riparian areas, tame forage, native prairie, coulees, cropland, roadsides, yard sites, waste areas and gravel pits**Time of Flowering:** bracts appear in early June; true flowers appear end of June and continue to flower into the fall**Key Distinguishing Characteristic(s):** milky latex sap is produced when stems or leaves are broken**Impact:** chokes out other vegetation; can be toxic to cattle and horses

### Plant Shape



### Management







P

## Yellow Star Thistle – *Centaurea solstitialis*

**Also Known As:** Barnaby's thistle, yellow cockspur

**General Description:** winter annual with deep tap root; yellow flower head surrounded by a star of long sharp thorns

**Leaves:** basal leaves generally 2 to 3 inches (5.0 to 7.6 cm) long and deeply lobed; long and narrow shaped upper leaves attach to wings running down the sides of stem

**Stems:** stiff, upright stems are covered in fine woolly silvery hair; grey-green to bluish-green

**Height:** 2 to 72 inches (5 to 183 cm) tall, with an average of 12 to 36 inches (30 to 61 cm) tall

**Flower:** yellow, tubular; flower heads sit on stem tips within bracts with sharp 0.25 to 2.0 inch (0.64 to 5.0 cm) long golden-coloured thorns arranged around the flower head in a star shape

**Habitat:** tame forage, native prairie, cropland, waste areas, roadsides and gravel pits

**Time of Flowering:** late June through August

**Key Distinguishing Characteristic(s):** star shape arrangement of sharp golden-coloured thorns on flower bracts

**Impact:** chokes out desired vegetation; high water consumer; thorns can injure livestock and wildlife; fatally toxic to horses if consumed

### Plant Shape



### Management



Yellow Star Thistle



N

## Canada Thistle – *Cirsium arvense*

**Also Known As:** California thistle, field thistle, creeping thistle

**General Description:** perennial thistle with tap root and extensive creeping root system; grows in patches which can spread quickly; plants are either male or female

**Leaves:** numerous, light to dark green, hairless to cobwebby undersides; long with irregular shaped spine-toothed lobes; alternate on the stem

**Stems:** slightly prickly, wingless; light to dark green

**Height:** up to 48 inches (122 cm) tall

**Flower:** rose-purple to pink-white, tubular; flower heads numerous, up to 0.75 inches (1.9 cm) wide; male (globe-shaped) and female (flask-shaped) flower heads on separate plants; sits within almost spineless bracts on the ends of branches

**Habitat:** riparian areas, tame forage, native prairie, fence rows, waste areas, yard sites, cropland, roadsides and gravel pits

**Time of Flowering:** throughout summer

**Key Distinguishing Characteristic(s):** small flower heads and green, wingless but prickly stems; spines only on leaf edges; male and female flowers are found on different plants

**Impact:** chokes out other vegetation; new plants can grow from root segments

### Plant Shape



### Management



**N**

## Nodding Thistle – *Carduus nutans*

**Also Known As:** musk thistle, plumeless thistle

**General Description:** biennial with long tap root; nodding flower heads on top of slightly branched plant

**Leaves:** up to 16 inches (41 cm) long, dark green, with deep, light green midrib and spiny toothed edges; deeply lobed in an irregular fashion; alternate on the stem

**Stems:** small spiny wings along the stem; very few branches; stems naked directly below the flower heads

**Height:** 12 to 72 inches (30 to 183 cm) tall

**Flower:** tubular, purple; 1 to 2.5 inch (2.5 to 6.4 cm) wide flower head; flower heads sit within spine-tipped bracts on branch tops; outer bracts bent at right angles to the flower head; flower heads often nod over

**Habitat:** tame forage, native prairie, roadsides, waste areas and gravel pits

**Time of Flowering:** July through September in the 2nd year of growth

**Key Distinguishing Characteristic(s):** nodding flower heads; outer bracts bent at right angles to the flower heads; naked stems directly below the flower heads

**Impact:** chokes out other vegetation

Nodding Thistle

### Plant Shape



### Management





P

## Field Scabious – *Knautia arvensis*

**Also Known As:** blue buttons

**General Description:** single-stemmed perennial with tap root growth; pale blue to purple, half-sphere shaped flower heads

**Leaves:** hairy, 4 to 10 inches (10.2 to 25 cm) long; rosette leaves are jaggedly toothed; stem leaves are deeply lobed and opposite on the stem

**Stems:** tall, slightly branched with stiff hairs covering the stem

**Height:** up to 60 inches (152 cm) tall

**Flower:** small, pale blue to purple coloured; clustered into 1 to 1.5 inch (2.5 to 3.8 cm) wide, half-sphere shaped flower heads on the ends of long leafless branches; very few flower heads per plant

**Habitat:** riparian areas, tame forage, waste areas, native prairie, abandoned cropland, yard sites, cropland, roadsides and gravel pits

**Time of Flowering:** June through early fall

**Key Distinguishing Characteristic(s):** tall, slightly branched with hairy leaves and stems; pale blue to purple coloured, half-sphere shaped flower heads

**Impact:** competes with other vegetation; not palatable to livestock and wildlife

### Plant Shape



### Management



**N**

## Purple loosestrife – *Lythrum salicaria*

**Also Known As:** lythrum, purple lythrum

**General Description:** wetland perennial; extensive tap root and creeping root system sprouts many square-shaped stems which support loose spikes of magenta-coloured flowers

**Leaves:** dark green, opposite or whorled in 3's, attached directly to the stem; narrow with a rounded base and smooth leaf edges

**Stems:** square-shaped (sometimes 5 or 6-sided); hairless to slightly hairy; one plant can sprout more than 30 stems

**Height:** 18 to 78 inches (46 to 198 cm) tall

**Flower:** 5 – 7 reddish-purple to magenta-coloured petals surrounding a small yellow center; loosely clustered into spikes along stem tops

**Habitat:** riparian areas, wetlands and yard sites

**Time of Flowering:** July through September

**Key Distinguishing Characteristic(s):** square-shaped stems, magenta flowers and narrow leaves without stalks

**Impact:** chokes out desired wetland vegetation

Purple loosestrife

### Plant Shape



### Management



**N**

## Dames Rocket – *Hesperis matronalis*

Dames Rocket

**Also Known As:** common dames violet, sweet rocket, mother-of-the-evening

**General Description:** dark green tall biennial or perennial with rosette in seedling year; single or multi-stemmed 2nd year growth with a tap root system; belongs to the mustard family; is a prolific seed producer

**Leaves:** 2 to 6 inches (5 to 15 cm) long, 0.4 to 1.6 inches (1 to 4 cm) wide, dark green, hairy on top and bottom; leaves get smaller further up the stem; jagged toothed edges; oblong to oblanceolate shaped; alternate on the stem

**Stems:** hairy; stiff and erect with some branching at the top; sometimes there is more than one stem per plant

**Height:** up to 39 inches (100 cm) tall; may be taller in riparian areas

**Flower:** 4 petals; fragrant flowers in loose clusters (like a loose ball) at the branch ends; usually purple in color but pink and white varieties exist

**Habitat:** riparian areas, gardens, shorelines, abandoned cropland, wooded areas, shrub bluffs, native prairie, coulees, yard sites, and waste areas

**Time of Flowering:** May through June or July

**Key Distinguishing Characteristic(s):** fragrant 4-petal flowers in loose clusters and alternate leaves

**Impact:** crowds out native vegetation because of large number of seeds released; decreases riparian area health

**Plant Shape****Management**

**N**

## Common Burdock – *Arctium minus* subsp. *minus*

**Also Known As:** wild rhubarb, beggar's button, elephant's ear, wild burdock, lesser burdock

**General Description:** tap rooted biennial; large alternate leaves

**Leaves:** somewhat heart shaped, similar to rhubarb leaves; deeply veined, alternate; up to 12 inches (30 cm) in length at the base, becoming smaller higher up the plant

**Stems:** tall, branched and hairy; stems and leaf stalks are hollow and grooved

**Height:** 24 to 72 inches (61 to 183 cm) tall at maturity

**Flower:** purple to white; disc-shaped flower heads at the ends of stems and at leaf axils along stems; 0.6 to 1.2 inches (1.5 to 3.0 cm) wide; heads surrounded by bracts with harsh, hooked spines

**Habitat:** riparian areas, coulees, yard sites, fencerows, waste areas and roadsides

**Time of Flowering:** mid-July through mid-September

**Key Distinguishing Characteristic(s):** tall stalky plant with very large alternate leaves (up to 12 inches or 30 cm long); large bur surrounds seeds

**Impact:** outcompetes vegetation; large burs impact livestock production and health

Common Burdock

### Plant Shape



### Management







P

## Salt Cedar – *Tamarix* spp.

Salt Cedar

**Also Known As:** tamarisk

**General Description:** spindly perennial shrub or tree forming a dense thicket; small white to pink flowers cover the tree

**Leaves:** alternate, blue-green turning golden-orange in the fall before falling off; small (0.06 inches or 0.15 cm long), scale-like, lance-shaped; resemble juniper leaves

**Stems:** willowy, smooth, varying greatly in color when young; mature stems grey or brownish, grooved and wrinkled in appearance

**Height:** 60 to 240 inches (152 to 610 cm) tall at maturity

**Flower:** small, light pink to white; four to five 0.04 to 0.08 inch (0.1 to 0.2 cm) long petals; flowers can number in the thousands

**Habitat:** riparian areas, wetlands and yard sites

**Time of Flowering:** spring through early fall

**Key Distinguishing Characteristic(s):** spindly tree with juniper-like leaves covered in small white to pink flowers

**Impact:** chokes out desired vegetation and concentrates salts near the soil surface to deter other species from growing; fire tolerant; high consumer of water (200 gal or 757 L/day)

### Plant Shape



### Management





**P**

## Spotted Knapweed – *Centaurea maculosa*

**Also Known As:** knapweed

**General Description:** biennial or perennial with long tap root; pink to purple-coloured flowers

**Leaves:** somewhat hairy; deeply lobed dividing the leaf into narrow segments; alternate, usually clasping the stem; basal leaves “cobwebby” in appearance

**Stems:** branched, hairy; upper stems almost straight up and down

**Height:** 24 to 36 inches (61 to 91 cm) tall

**Flower:** usually pink to purple, tubular; flower heads 0.2 to 0.3 inches (0.6 to 0.8 cm) wide, numerous; flower heads sit on tops of leaf branches in oval bracts with a black fringe

**Habitat:** native prairie, tame forage, roadsides and waste areas

**Time of Flowering:** June through October

**Key Distinguishing Characteristic(s):** oval-shaped, black-fringed flower head bracts; “cobwebby” basal leaves; pink to purplish flowers

**Impact:** chokes out other vegetation; avoided by grazing animals

Spotted Knapweed

### Plant Shape



### Management



**N**

## Russian Knapweed – *Acroptilon repens*

**Also Known As:** *Centaurea repens*, hard heads

**General Description:** branched perennial with blackish, scaly, creeping roots; grows in dense patches

**Leaves:** narrow with irregular teeth at the base of the plant; upper leaves narrow, smooth edged with a spine at the tip; alternate, usually clasping the stem; woolly when young

**Stems:** highly branched; covered with soft grey hairs

**Height:** 24 to 36 inches (61 to 91 cm) tall

**Flower:** tubular flowers form a spherical flower head; flower heads 0.6 to 1.3 inches (1.5 to 3.3 cm) in diameter; sits on tops of leaf branches in entire bracts; silvery when unopened, pink to purple when open and straw-coloured when older

**Habitat:** cropland, native prairie, tame forage, roadsides and waste areas

**Time of Flowering:** July

### Key Distinguishing

**Characteristic(s):** upper leaves end in a soft spine but the rest of the plant generally lacks spines and prickles; flower head bracts are entire

**Impact:** chokes out other vegetation

### Plant Shape



### Management





P

## Red Bartisia – *Odontites serotina*

**Also Known As:** late flowering eye-bright, red rattle

**General Description:** annual, hemiparasite; pinkish-red axillary flowers

**Leaves:** hairy; opposite; lance shaped; stalkless; 0.4 to 1.2 inches (1 to 3 cm) in length with 2 or 3 pairs of blunt teeth

**Stems:** erect; branched and hairy

**Height:** 4 to 16 inches (10 to 40 cm) tall

**Flower:** spike-like raceme; individual axillary flowers; light red/pink or purple with snapdragon appearance; 0.4 inches (1 cm) in length

**Habitat:** native prairie, tame forage and roadsides

**Time of Flowering:** June through September

### Key Distinguishing

**Characteristic(s):** pinkish-red to purple axillary flowers with snapdragon appearance, opposite hairy leaves with 2 to 3 blunt teeth

**Impact:** quickly overtakes forage stands causing 50–70% forage loss; unpalatable to livestock; feeds off roots of grass and forbs as it is parasitic; prolific seed producer

**Management:** no current known management available

### Plant Shape





**P**

## Diffuse Knapweed – *Centaurea diffusa*

Diffuse Knapweed

**Also Known As:** white knapweed, spread knapweed

**General Description:** branched biennial or short-lived perennial with long tap root

**Leaves:** woolly, deeply lobed dividing the leaf into narrow segments; alternate leaves usually clasping the stem; basal leaves “cobwebby”

**Stems:** highly branched, hairy

**Height:** 24 to 36 inches (61 to 91 cm) tall

**Flower:** usually white to light purple, tubular; numerous; flower heads sit on stem tops in triangular, spine-tipped bracts

**Habitat:** native prairie, tame forage, roadsides and waste areas

**Time of Flowering:** July

**Key Distinguishing Characteristic(s):** triangular, spine-tipped flower head bracts; “cobwebby” basal leaves

**Impact:** chokes out other vegetation; avoided by grazing animals

### Plant Shape



### Management



**N**

## Baby's Breath – *Gypsophila paniculata*

**Also Known As:** angel breath

**General Description:** perennial with deep thick root; sparse foliage with open branched stems and numerous tiny flowers

**Leaves:** 1 to 4 inches (2.5 to 10.2 cm) long, blue-green to grey-green with glandular hairs; narrow, lance shaped with a single vein running up the middle of the leaf; opposite on the stem

**Stems:** slender, branched, blue-green to grey-green in colour; swollen where leaves attach to stems

**Height:** 12 to 36 inches (30 to 91 cm) tall

**Flower:** 5 white to rosy-coloured petals; tiny (less than 0.4 inches or 1.0 cm wide) and numerous on small spreading flower branches; gives the plant a “puff ball” appearance

**Habitat:** tame forage, native prairie, roadsides, waste areas and gravel pits

**Time of Flowering:** June through August; flowers for the first time in its 3rd year

**Key Distinguishing Characteristic(s):** highly branched; flowers and flower branches give the plant a large, round, sparse, airy “puff ball” appearance

**Impact:** crowds out other vegetation

Baby's Breath

Plant Shape



Management



**N**

## Field Bindweed – *Convolvulus arvensis*

Field Bindweed

**Also Known As:** creeping Jenny, European bindweed, morning glory, perennial morning glory

**General Description:** perennial with tap root and creeping root system; forms an extensive mat or climbs counterclockwise up nearby plants or objects

**Leaves:** dull green; arrow-head shaped, anchored by leaf stems off the main stem; numerous leaves of varied sizes on a single plant

**Stems:** smooth, 12 to 120 inches (30 to 305 cm) long; can wind counterclockwise around nearby plants or objects

**Height:** prostrate; needs to crawl up nearby objects and plants to achieve height

**Flower:** pinkish to white, up to 1 inch (2.5 cm) in diameter; morning glory or bell/trumpet shaped; on long flower stems with 2 small bracts part way down each flower stem

**Habitat:** cropland, riparian areas, tame forage, native prairie, waste areas, roadsides and gravel pits

**Time of Flowering:** June through September

**Key Distinguishing Characteristic(s):** 2 small bracts on the flower stems; climbs counterclockwise; large showy field bindweed flowers are easily distinguishable from wild buckwheat's small, inconspicuous flowers

**Impact:** chokes out other vegetation; makes harvesting crops and forages difficult

### Plant Shape



### Management



**N**

## Hoary Cress or White Top – *Cardaria draba*

**Also Known As:** pepper grass, white weed, heart-pod hoary cress

**General Description:** perennial, extensive creeping root system; small white flowers clustered on plant tops

**Leaves:** blue-green to grey-green; covered with fine hairs; egg to arrowhead-shaped; the large, narrow basal leaves have leaf stalks while the upper leaves have two lobes clasping the stem

**Stems:** greyish, hairy at base to hairless at the top of plant; slightly branched

**Height:** up to 24 inches (61 cm) tall

**Flower:** four small (0.12 inch or 0.3 cm long) white petals; flowers densely clustered on stem tops — appear flat topped

**Habitat:** roadsides, cropland, tame forage, native prairie, waste areas and gravel pits

**Time of Flowering:** May through July

**Key Distinguishing Characteristic(s):** clustered white flowers on tops of plants with large, finely haired leaves; seed pod is heart-shaped and contains two seeds

**Impact:** chokes out desired vegetation

Hoary Cress or White Top

### Plant Shape



### Management



**P**

## Poison Hemlock – *Conium maculatum* L.

**Also Known As:** deadly hemlock, poison parsley, snakeweed, wode whistle, poison stinkweed, St. Bennet's herb, bad man's oatmeal, poison root

**General Description:** biennial or short-lived perennial with tap root; white flowers arranged in umbel flowering structure

**Leaves:** 7 to 15 inches (20 to 40 cm) long; hairless basal; fernlike leaf shape; alternate on stem

**Stems:** ridged and hollow; pale green with purple spotting

**Height:** up to 118 inches (300 cm) tall

**Flower:** white; small, 0.079 to 0.16 inches (0.2 to 0.4 cm) wide that make up terminal and lateral umbels 0.78 to 1.6 inches (2 to 8 cm) wide

**Habitat:** riparian areas, wetlands, full sun to light shade

**Time of Flowering:** second year, July through August

**Key Distinguishing Characteristic(s):** purple streaking on stems

**Impact:** colonizes disturbed areas rapidly; all parts of the plant are highly toxic to livestock; ingestion of lethal dose can cause death in 2 hours

### Plant Shape



### Management





**N**

## Scentless Chamomile – *Matricaria perforata*

**Also Known As:** scentless mayweed, scentless false mayweed

**General Description:** annual or biennial, rarely a perennial; dense fibrous roots; white daisy-like flowers

**Leaves:** smooth, very finely divided, almost carrot-like; alternate on the stem, usually without stalks; scentless

**Stems:** hairless, highly branched; upward curving branches

**Height:** 6 to 36 inches (15 to 91 cm) tall

**Flower:** daisy-like with yellow centre and white petals; 0.8 to 1.6 inches (2.0 to 4.0 cm) wide; occurs individually on stem tips

**Habitat:** roadsides, yard sites, riparian areas, cropland, tame forage, native prairie, waste areas and gravel pits

**Time of Flowering:** late May through October

**Key Distinguishing Characteristic(s):** leaves are finely divided (almost carrot-like) and practically odorless when crushed

**Impact:** chokes out desired vegetation; seed viable when flowering

Scentless Chamomile

### Plant Shape



### Management



N

Hoary Alyssum – *Berteroa incana*

**Also Known As:** hoary alison, hoary berteroa, hoary false madwort, hoary false alyssum

**General Description:** greenish-grey, branched, multi-stemmed perennial with tap root growth; star shaped hairs on seed pods, stems and leaves; in the mustard family

**Leaves:** ½ to 3 inches (1.3 to 7.6 cm) long, numerous, covered in star-shaped hairs, greenish-grey, smooth edges; lanceolate to oblong shaped; short leaf petioles to no petioles; bottom leaves are basal; alternate leaves on stem

**Stems:** covered in star-shaped hairs, greenish-grey; one or more stems from the same plant; fine branched tops

**Height:** up to 36 inches (91 cm) tall

**Flower:** small white flowers in ball-like clusters; individual flowers .08 to

0.11 inches (2 to 3 mm) in diameter with deeply notched petals; numerous

**Habitat:** sandy or gravelly soils, tame forage, railroad tracks, waste areas, abandoned cropland, roadsides and gravel pits

**Time of Flowering:** June through September

**Key Distinguishing Characteristic(s):** star-shaped hairs covering the stem, leaves and seed pods giving the plant a grayish appearance

**Impact:** competes with other vegetation as it produces seed in high quantities summer-long; taints hay; toxic to horses

## Plant Shape



## Management



**N**

## Ox-Eye Daisy – *Chrysanthemum leucanthemum*

Hoary Alyssum

**Also Known As:** white daisy; field daisy; dog daisy, moon penny

**General Description:** shallow rooted perennial plant with white daisy-like flowers; numerous slightly curving stems from one base; reproduces by seeds (at an average of 859,000 seeds per pound of plant) or by creeping roots

**Leaves:** lower leaves are dark green, toothed, spoon-shaped and stalked; upper leaves are narrower and stalkless or clasp the stem tightly; leaves are reduced in size moving up the plant; stem leaves are alternate, smooth and glossy

**Stems:** hairless and erect or slightly curving upwards

**Height:** 8 to 35 inches (20 to 90 cm) tall; may grow over 40 inches (100 cm) tall in riparian areas

**Flower:** single daisy-like flowers at ends of stems and main branches; 15 to 30, 0.4 to 0.8 inches (1 to 2 cm)

long white petals on each flower head; centre florets are bright yellow, short, numerous, densely packed, forming a slightly rounded centre; the flower head base has overlapping, light green bracts with brownish margins

**Habitat:** roadsides, cropland, abandoned cropland, hayland, tame pasture, native prairie and riparian areas

**Time of Flowering:** early June to late fall

**Key Distinguishing Characteristic(s):** when crushed, all parts of the plant have a disagreeably sour odour; daisy like flowers; deep green glossy leaves

**Impact:** very common and often forms dense infestations in pastures, roadsides, riparian areas, gardens and lawns; travels easily along rivers; seeds float.

### Plant Shape



### Management





## Orange Hawkweed – *Hieracium aurantiacum*

**Also Known As:** devil's weed, devil's paintbrush, orange paintbrush

**General Description:** perennial with fibrous root system and creeping, leafy stolons; orange, dandelion-like flowers

**Leaves:** spatula-shaped rosette leaves are 1.5 to 8 inches (3.8 to 20.3 cm) long; bristly hairs cover the leaves; stems are leafless or have small clasping alternate leaves on the lower half

**Stems:** covered with branched or star-shaped black hairs; one or more stems come from the basal rosette; contain a milky sap

**Height:** up to 12 inches (30 cm) tall

**Flower:** yellow-orange to red-orange in colour; 0.5 to 0.75 inches (1.3 to 1.9 cm) wide, dandelion-like with notched petal tips; clustered at the ends of the stems; a single plant can have 1 to 50 flowers

**Habitat:** tame forage, yard sites, roadsides, gravel pits, native prairie, waste areas and abandoned cropland

**Time of Flowering:** June through September

**Key Distinguishing Characteristic(s):** creeping leafy stolons (like strawberries) sprout from the rosette; hairy stems and leaves; yellow-orange to red-orange dandelion-like flowers

**Impact:** produces a dense mat that chokes out other vegetation

### Plant Shape



### Management



## **NEED ADDITIONAL INFORMATION?**

Saskatchewan Invasive Species Council

[www.saskinvasives.ca](http://www.saskinvasives.ca)

Alberta Invasive Species Council

[www.abinvasives.ca/home](http://www.abinvasives.ca/home)

Saskatchewan iMapInvasives

[www.biodiversity.sk.ca/invasives.htm](http://www.biodiversity.sk.ca/invasives.htm)

Saskatchewan Association of Rural Municipalities

[www.sarm.ca](http://www.sarm.ca)

Agriculture Knowledge Centre

1 (866) 457 2377

Provincial Weed Control Specialist

1 (306) 787 4673

**Allelopathic** – the inhibition or retardation of growth in one species of plants by chemicals produced by another species.

**Alternate** – situated singly (not opposite) on a stem (CPWR).

**Annual** – plant completes its life cycle in one year; grows from seed, flowers and sets seed in the same year.

**Auricles** – in grasses, the small, ear shaped appendages at the base of a leaf (CPWR).

**Awns** – a bristle-like appendage at the end of a flower or seed head (CPWR).

**Basal** – at the base of the plant (CPWR).

**Biennial** – plants completing their life cycle in two years; usually only flowering in the second year (CPWR).

**Bracts** – a small reduced/modified scale or leaf often borne below a flower or flower cluster (CPWR/WAP).

**Clasping leaves** – the leaf base is partially or completely surrounding the stem (CPWR).

**Cobwebby** – hairs on plant, generally on leaves, resembling the web of a spider in gauziness.

**Crown** – somewhat enlarged, bottom portion of a plant from which the stem, roots, and/or stolons grow (NRP).

**Deeply lobed** – a deep rounded projection of a leaf or a leaf-like part of a plant (WAP).

**Diffuse** – spread out, scattered.

**Entire bracts** – large, full shaped bracts with smooth edges; without notches or indentations.

**Finely divided leaves** – leaves that have numerous delicate separations in one leaf; the leaf sometimes appears ‘feather-like’.

**Flower head** – the grouping of tubular flowers into what appears to be a single flower.

**Foliage** – the green parts, primarily leaf matter, of a plant.

**Glandular hairs** – hairs sitting within glands. Glands are small secreting structures that may be protruding, stalked or depressed, and producing oils or nectar (CPWR).

**Hybridize** – when two plants of a different species within the same genus cross and produce a viable offspring.

**Lance-shaped** – narrow, but with being wider below the middle and tapering above; generally many times longer than broad (CPWR).

**Leaf axil** – where the leaf or leaf stem/leaf stalk meets a main stem.

**Leaf stalk** – joins the leaf to a main stem; also called a leaf stem.

**Leaf sheath** – the lower part of a leaf blade that clasps and encloses the stem.

## Glossary

**Ligule** – in grasses, the small, thin appendage projecting from the inner leaf surface at the junction of the stem and the leaf (CPWR).

**Lobe** – a rounded projection of a leaf or a leaf-like part of a plant (WAP).

**Mid-rib** – the central vein on a leaf (CPWR).

**Multi-stemmed** – more than one stem arising from the root of a plant.

**Nodding** – flower head bent downwards.

**Nodes** – the point of attachment on a stem from which leaves, branches, and in some cases roots arise; often swollen (CPWR).

**Oval bracts** – bracts in an egg shape with ends equally tapered (WAP).

**Perennial** – a plant (or part) that lives more than two years (CPWR).

**Prostrate** – laying flat along the ground.

**Rhizomes** – a shallow underground stem which stretches out horizontally, producing new shoots and roots along it (CPWR).

**Rosette** – a circular arrangement of leaves, often on the ground or at the base of the plant (CPWR).

**Scalloped** – edges with a series of gentle curves.

**Spherical** – having the shape of a sphere or globe.

**Spike** – a flower cluster with stalkless individual flowers on a common stalk (WAP).

**Spikelets** – the combined group of one or more grass flowers attached to the grass stem directly or with a stalk (NRP).

**Spur** – a hollow projection from the flower petals or centre; usually at the base of a flower (CPWR/WAP).

**Stalk** – joins the leaf to a main stem; also called a leaf stem.

**Stolons** – above-ground, horizontal branch from the base of a plant which may take root and produce a new plant (NRP).

**Succulent** – fleshy or juicy from the accumulation of water in the tissues (CPWR).

**Thorns** – short, stiff, sharp-pointed appendages; stouter than bristles, prickles, or spines. (CPWR).

**Tubular flowers** – a tube-shaped grouping of petals, with little expansion outwards. Often, many tubular flowers are grouped together on a flower head (CPWR).

**Wing** – any thin, flat, usually membranous expansion on a plant part (i.e. wing along a stem) (CPWR).

Glossary definitions obtained from: *Wildflowers Across the Prairies* (WAP); *Common Plants of the Western Rangelands Volume 3 Forbs* (CPWR); *Northern Range Plants* (NRP)

## References:

- Alberta Agriculture and Forestry. Noxious, and Prohibited Noxious Weeds in Alberta. 2010. [www1.agriculture.alberta.ca/\\$department/deptdocs.nsf/all/faq8261](http://www1.agriculture.alberta.ca/$department/deptdocs.nsf/all/faq8261)
- Alberta Invasive Plants Council. Common Tansy, Scentless Chamomile, Dames Rocket, Field Scabious, & Ox-Eye Daisy fact sheets. 2014. [www.abinvasives.ca](http://www.abinvasives.ca)
- Bubar C.J., McColl S.J., & Hall L.M. *Weeds of the Prairies*. Alberta Agriculture and Forestry. 2015
- Calliham R.H., Wilson L.M., McCaffrey J.P., & Miller T. *Hawkweeds*. Pacific Northwest Extension. 1997.
- CFIA. *Tamarix spp.-Saltcedar, A Canadian Concern*. CFIA. 2007.
- Darbyshire S.J. Inventory of Canadian Agricultural weeds. 2003. <http://publication.gc.ca/collection/A42-100-2003E.pdf>.
- Dickinson R., Royer F. *Weeds of North America*. University of Chicago Press. 2014
- E-Flora of BC. Atlas Pages. 2017. <http://ibis.geog.ubc.ca/biodiversity/eflora/invasives>
- Government of Canada. Weed Seed Order 2016. CFIA. 2016. [www.inspection.gc.ca/plants/seeds/weed-seeds-order/eng/1463453027786/1463453028410](http://www.inspection.gc.ca/plants/seeds/weed-seeds-order/eng/1463453027786/1463453028410).
- Government of Montana. Montana Noxious Weeds List. 2017. <http://agr.mt.gov/Weeds>
- Government of Saskatchewan. *The Weed Control Act and Regulations 2010*. <http://www.publications.gov.sk.ca/details.cfm?p=31364>
- Hargrave A.N. *Seeded Plants for Forage and Reclamation in Saskatchewan*. Saskatchewan Forage Council. 2010 (2007).
- Invasive.org. Biology and Control of Purple Loosestrife. Dames Rocket fact sheet. 2005. [www.invasive.org](http://www.invasive.org).
- Jacobs J. & Sing S. Ecology and Management of Dalmation Toadflax (MT3) & Ecology and Management of Yellow Toadflax (MT6). USDA-NRCS. 2006.
- Jacobs J. & Wiese J. Ecology and Management of Invasive Hawkweeds (MT16). USDA-NRCS. 2007.
- Johnson W.S., Wilson R. & Graham J. *Invasive Weed Identification for Nevada*. University of Nevada. 1999.
- King County Noxious Weed Control Program. Hawkweed BMPs. 2017. <https://www.kingcounty.gov/services/environment/animals-and-plants/noxious-weeds/brochures-reports/brochures-by-species.aspx>
- Looman J. *Budd's Flora of the Canadian Prairie Provinces*. Agriculture and Agr-Food Canada. 1979.
- Lym R.G. Dalmation Toadflax and Yellow Toadflax Identification and Control. 2002. [www.ag.ndsu.edu/pubs/plantsci/weeds/w1239w.htm](http://www.ag.ndsu.edu/pubs/plantsci/weeds/w1239w.htm).
- Manitoba Agriculture, Food and Rural Initiatives. Declaration of Noxious Weeds in Manitoba. 2006. [www.gov.mb.ca/agriculture/crops/weeds/declaration-of-noxious-weeds-in-mb.html](http://www.gov.mb.ca/agriculture/crops/weeds/declaration-of-noxious-weeds-in-mb.html).
- Moss E.H. *Flora of Alberta*. (2nd Ed) Revised by Packer J.G. University of Toronto Press. 2000.
- Parker D. & Reiser M.H. *Low-Impact, Selective Herbicide Application for Control of African Rue*. USDA Forest Service. 1997.
- Saskatchewan Agriculture and Food. Scentless Chamomile, Biology and Management. 2004.
- Stone C. & Lawrence D. *Northern Range Plants*. Alberta Agriculture and Forestry. 2017. [http://www1.agric.gov.ab.ca/\\$department/deptdocs.nsf/all/agdex12481](http://www1.agric.gov.ab.ca/$department/deptdocs.nsf/all/agdex12481)
- Tannas, K. *Common Plants of the Western Rangelands, Volume 3 Forbs*. Olds College & Alberta Agriculture and Forestry. 2017.
- TNC. Elements of Stewardship Abstract of Lythrum salicaria. 2007. [www.invasive.org/gist/esadocs/docmnts/lythsal.pdf](http://www.invasive.org/gist/esadocs/docmnts/lythsal.pdf)
- USDA Fire Effects Database. Bromus japonicus. 2007. [www.fs.fed.us/database/feis/plants/graminoid/brojrap/all.html](http://www.fs.fed.us/database/feis/plants/graminoid/brojrap/all.html)
- USDA Forest Service. Cheatgrass, Dame's Rocket. 2017. [www.na.fs.fed.us/fhp/invasive\\_plants](http://www.na.fs.fed.us/fhp/invasive_plants).
- Vance F.R., Jowsey J.R., McLean J.S. & Switzer F.A. *Wildflowers Across the Prairies*. Western Producer Prairie Books. 1999.
- Weeds BC. Yellow Starthistle. 2007. [https://www.for.gov.bc.ca/hra/Plants/weedsbc/yellow\\_starthistle.pdf](https://www.for.gov.bc.ca/hra/Plants/weedsbc/yellow_starthistle.pdf).
- Wilson L.M., Jette C., Connett J. & McCaffrey, J.P. Biology and Biological Control of Yellow Starthistle. <https://www.invasive.org/browse/subinfo.cfm?sub=4390>
- Wright W.H. & Steins I. *Weeds of Canada*. Canada Department of Agriculture. 1970.



## Photo Credits:

**Front Cover** : R. Turnquist, SK Ministry of Ag, Moose Jaw (All)

**Pg 1**: J. MacKenzie, Hazenmore **Pg 4**: t-b: reproduced with permission from *Weeds of the Prairies*, Agdex 640-4, pg. 2, AB Ag & Forestry; *Prairie Grasses*, pg. 8, Agriculture Canada, 1971. Reproduced with permission of the Minister of Public Works and Government Services Canada, 2007. **Pg 5**: *Budd's Flora of the Canadian Prairie Provinces*, pg 15, fig. 3 & 4, Agriculture Canada, 1979. Reproduced with permission of the Minister of Public Works and Government Services Canada, 2007. **Pg 7**: lft-rt: S. Dewey, USU, bugwood.org; S. Hurst, USDA, bugwood.org; S. Dewey, USU, bugwood.org **Pg 8**: lft-rt: R. Holm, U of S, Saskatoon; R. Holm, U of S, Saskatoon **Pg 9**: lft-rt: R. Old, XID Services, bugwood.org; C. Evans, River to River CWMA, bugwood.org; R. Old, XID Services, bugwood.org

**Pg. 10**: lft-rt: C. Brenzil, SK Ministry of Ag, Regina; Brenzil, SK Ministry of Ag, Regina; Brenzil, SK Ministry of Ag, Regina **Pg. 11**: lft-rt: R. Innes, Powell River BC; S. Dewey, USU, bugwood.org **Pg. 12**: lft-rt: USU Archives, USU, bugwood.org; S. Dewey, USU, bugwood.org **Pg. 13**: lft-rt: R. Old, XID Services, bugwood.org; W. VanDyk Evans, bugwood.org **Pg. 14**: lft-rt: MT Statewide Noxious Weed Awareness & Education Program Archive, MSU, bugwood.org; MT Statewide Noxious Weed Awareness & Education Program Archive, MSU, bugwood.org; N.E. Rees, USDA, bugwood.org **Pg. 15**: lft-rt: S. Dewey, USU, bugwood.org; S. Dewey, USU, bugwood.org; R. Turnquist, SK Ministry of Ag, Moose Jaw **Pg 16**: lft-rt: M. Harte, bugwood.org; S. Dewey, USU, bugwood.org; UAF Cooperative Extension Archive, U of A, bugwood.org **Pg. 17**: lft-rt: S. Dewey, USU, bugwood.org; R. Layson, R. Layson Photography, bugwood.org; S. Dewey, USU, bugwood.org **Pg. 18**: lft-rt: C. Brenzil, SK Ministry of Ag, Regina; AIPC, invasiveplants.ab.ca; C. Brenzil, SK Ministry of Ag, Regina **Pg. 19**: lft-rt: J.D. Byrd, MS-SU, bugwood.org; S. Dewey, USU, bugwood.org; E. Coombs, Oregon Dept. Ag., bugwood.org

**Pg. 20**: lft-rt: J. MacKenzie, Hazenmore; Richard Old, XID Services, Inc., bugwood.org; Richard Old, XID Services, Inc., bugwood.org **Pg. 21**: lft-rt: M.E. Harte, bugwood.org; S. Sweeney, themondaygarden.com; S.

Sweeney, themondaygarden.com **Pg 22**: lft-rt: S. Dewey, USU, bugwood.org; S. Dewey, USU, bugwood.org; F. & K. Starr, USGS, bugwood.org **Pg 23**: lft-rt: C. Roche, bugwood.org; reproduced with permission from *Weeds of the Prairies*, Agdex 640-4, pg. 39, AB Ag & Forestry; C. Roche, bugwood.org **Pg. 24**: lft-rt: reproduced with permission from *Weeds of the Prairies*, Agdex 640-4, pg. 37, AB Ag & Forestry; S. Dewey, bugwood.org; reproduced with permission from *Weeds of the Prairies*, Agdex 640-4, pg. 37, AB Ag & Forestry **Pg. 25**: lft-rt: C. Neufeld, Native Plant Society of SK, Saskatoon; C. Neufeld, Native Plant Society of SK, Saskatoon; C. Neufeld, Native Plant Society of SK, Saskatoon **Pg. 26**: lft-rt: V. Skilton, eflora.bc.ca; R. Old, XID Services, bugwood.org; V. Skilton, eflora.bc.ca **Pg. 27**: lft-rt: R. Turnquist, SK Ministry of Ag, Moose Jaw; J. Riley, eflora.bc.ca; R. Turnquist, SK Ministry of Ag, Moose Jaw **Pg. 28**: lft-rt: G.A. Cooper, USDA, bugwood.org; Texas Weed Information Group, twig.tamu.edu **Pg. 28**: lft-rt: R. Old, XID Services, bugwood.org; S. Dewey, USU, bugwood.org **Pg. 29**: lft-rt: C. Evans, River to River CWMA, bugwood.org; MT Statewide Noxious Weed Awareness & Education Program, MSU, bugwood.org; C. Evans, River to River CWMA, bugwood.org

**Pg. 30**: lft-rt: D. Goldman, plants.usda.gov; R. Videki, invasive.org; B. Million, invasive.org **Pg. 31**: lft-rt: Nancy Gray, Watrous; R. Holm, U of S, Saskatoon; SK Ministry of Ag., Regina **Pg. 32**: lft-rt: Catherine Hems, The Ohio State University, bugwood.org; Catherine Hems, The Ohio State University, bugwood.org; Richard Old, XID Services, Inc., bugwood.org **Pg. 33**: lft-rt: Mary Ellen (Mel) Harte, bugwood.org; Richard Old, XID Services, Inc., bugwood.org; Steve Dewey, Utah State University, bugwood.org **Pg 34**: lft-rt: M. Shephard, USDA Forest Service, bugwood.org; M. Shephard, USDA Forest Service, bugwood.org; UAF Cooperative Extension Archive, U of A, bugwood.org

**Back Cover**: J. Hauer, SK Ministry of Ag, North Battleford

# Acknowledgements

Contribution for this guide was provided by project steering committee members including: John Hauer, Victoria Nameth, Rachel Turnquist (Saskatchewan Ministry of Agriculture); Heather Facette (Parks Canada); Renny Grilz (Meewasin Valley Authority); Julie MacKenzie (M-Over-C Land & Cattle Co.); Ray McVicar (Saskatchewan Forage Seed Development Commission); and Leanna Rousell (Saskatchewan Forage Council).

The Saskatchewan Forage Council and its partners would like to acknowledge the following sponsors for their support of this Guide.

Dow AgroSciences Range & Pasture

**SAFE. EFFECTIVE. RELIABLE.**

**Sustainable Pasture Management Solutions.**

For more information please visit [dowagro.ca](http://dowagro.ca)  
or call our Solutions Center at 1-800-667-3852.



Dow AgroSciences

Solutions for the Growing World



*Committed to protecting Saskatchewan's natural landscapes  
for future generations.*

[saskenergy.com](http://saskenergy.com)



Call or visit us online for information and  
expertise on crops, livestock and feed,  
programs and services.

1-866-457-2377 or [aginfo@gov.sk.ca](mailto:aginfo@gov.sk.ca)

[saskatchewan.ca/agriculture](http://saskatchewan.ca/agriculture)





**Navius<sup>®</sup>**

- Expanded label
- No restrictions on grazing or haying
- Lower application rates

**[www.BayerES.ca/VM](http://www.BayerES.ca/VM)**

ALWAYS READ AND FOLLOW LABEL DIRECTION.  
Bayer, the Bayer Cross and Navius are trademarks of Bayer.

**SFSDC**



Saskatchewan Forage Seed Development Commission

— *Forage Seed Growers' Levy at Work* —

**[www.skforageseeddc.com](http://www.skforageseeddc.com)**

**SaskBarley**  
DEVELOPMENT COMMISSION



**[www.saskbarleycommission.com](http://www.saskbarleycommission.com)**

THE VOICE OF SASKATCHEWAN'S CATTLE INDUSTRY

ADVOCACY

COMMUNICATION

RESEARCH



SASKATCHEWAN  
CATTLEMEN'S ASSOCIATION

call us: 1-877-908-BEEF (2333)

email us: [info@saskbeef.com](mailto:info@saskbeef.com)

like us: [www.facebook.com/saskbeef](http://www.facebook.com/saskbeef)

follow us: @SaskCattlemens

[WWW.SASKBEEF.COM](http://WWW.SASKBEEF.COM)

For additional copies or information contact:

**Saskatchewan Forage Council**

[www.saskforage.ca](http://www.saskforage.ca)

[office@saskforage.ca](mailto:office@saskforage.ca)

